

1945 8

**Resumé :**

Algeria suffer for rarity of resource of money important to build big industries, then its need model of development focus of PME because of advantage and its role to realized economic development, and finishing unemployment ,because its dangerous problem that faced Algeria in the last year ,but this enterprise faced many difficulties ,administration, finance, organisation at this causes the qualification of general situation in Algeria became important necessary to protect national production to foreign competition, special in the case of mondialisation

:

-  
-  
-

: \_\_\_\_\_ -I

500

50

"

"

(1)

"

(2)

-

-

2  
%25

250 1

500

(3)

<b>10</b>	<b>01</b>	<b>20</b>	<b>01</b>	<b>09</b>	<b>01</b>	
<b>100</b>	<b>10</b>	<b>200</b>	<b>20</b>	<b>49</b>	<b>10</b>	
<b>500</b>	<b>100</b>	<b>2</b>	<b>200</b>	<b>250</b>	<b>50</b>	

6-5 2001/12/15 77 :

: -II

1988

1994

1995 2000 1995 62000 2000  
(4) 29000

.(2004-1999)

159507	*1999
179893	*2001
188893	*2002
288587	**2003
312959	**2004

/ \*

.840 2003

\*\* site des ministère, bulletin d'information économique, 2002-2003-2004.

2004

2004

24372

%72.04	225 449	
%0.25	778	
%27.71	86 732	
%100	3 129 959	

Source : bulletin d'information économique, N° 06, 2004

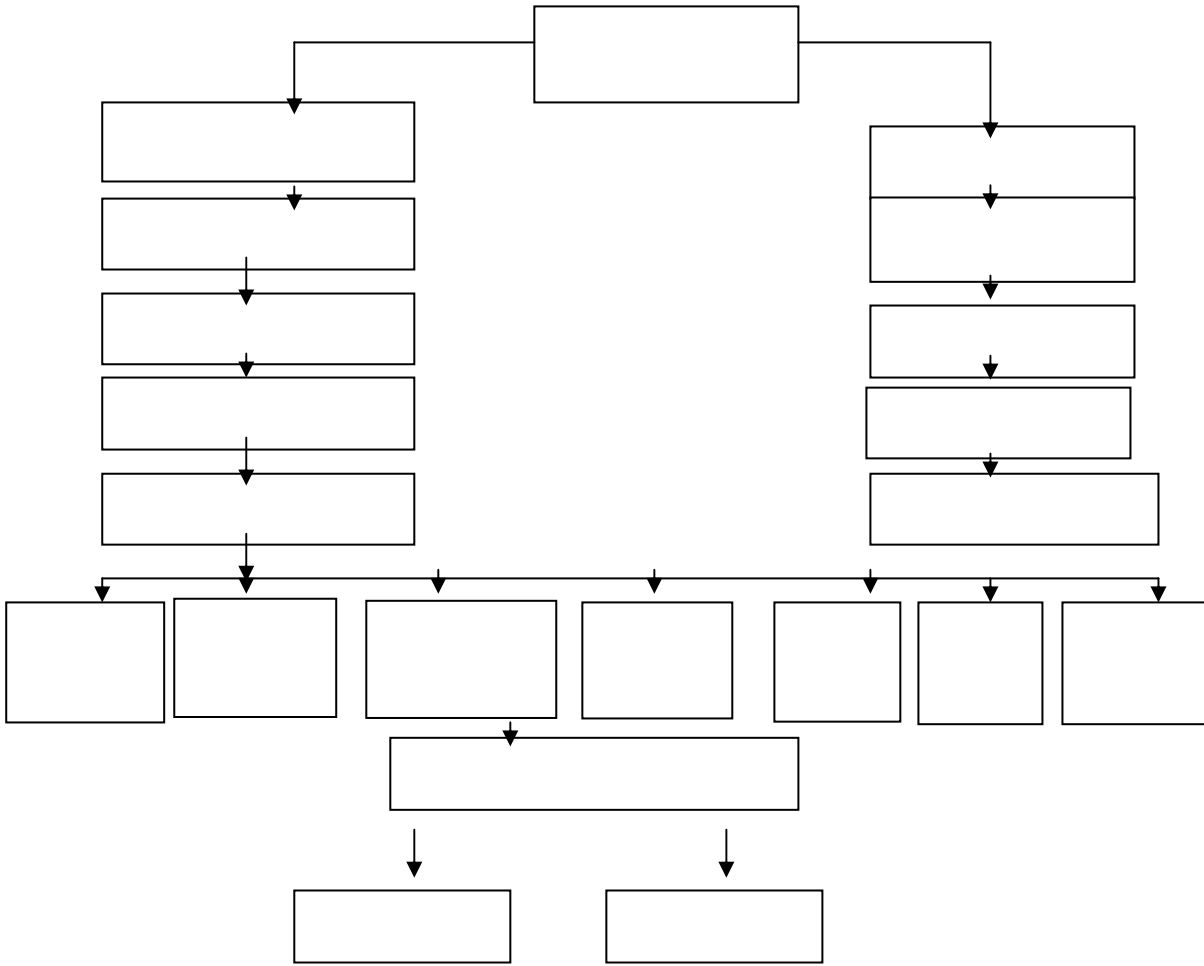
:

-III

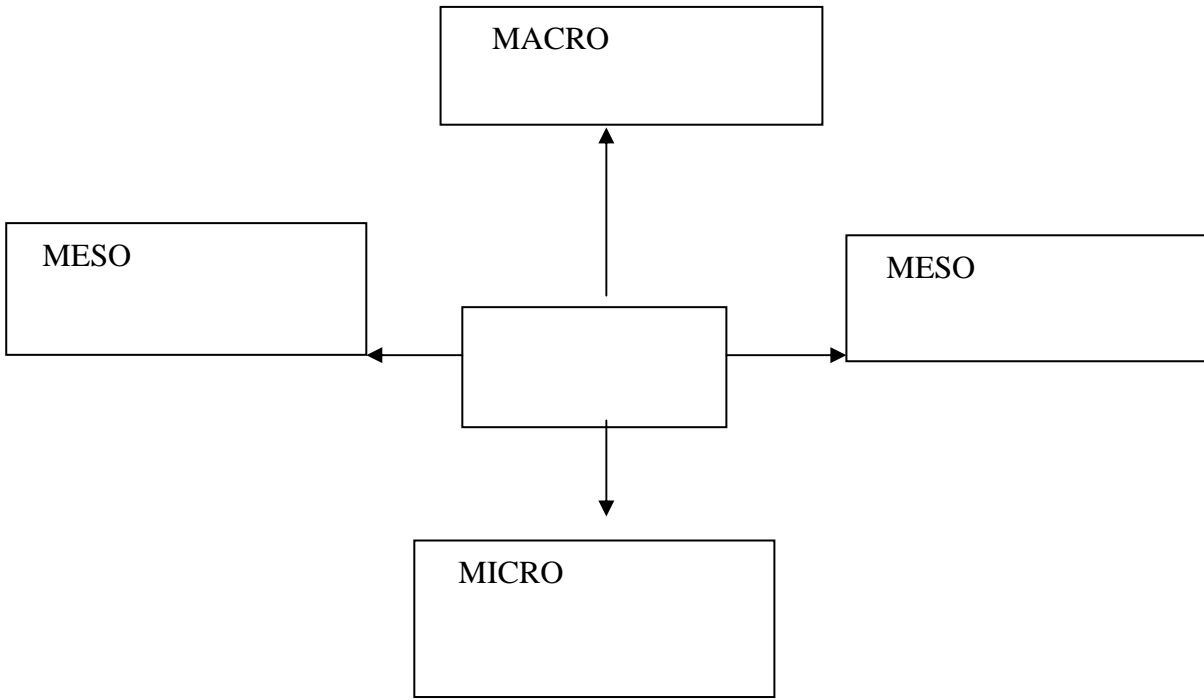
(1-III

" (5)

(6)



(2 -III



:

:

:-  
:-  
:-

-  
-  
-

:

.(3-III

:-  
:-

\*

3

90

1992

10  
60

72

2500

(7)

:

\*

:

2004

(30)

(3.5)

-  
-

(8)

:

(9)

12

20

•  
•  
•

(10)

:

.(

%70  
(11)

%50

3400

"MEDA"  
1996

1992

5

(1998-1996)

57

4

:

-

•

-

-

-

(12)

114

(PNUD)

(2000)

( )

:

(2000)

(FDCI)

-

-

150

2001

30

(13)2001

-

( )

:

" "

194.2

2001

1995

30.4

%90

30

" "

1996

.16 2000

.388 2004

.899 2003

.42 2004/3

.129 2002

.163 2002/

15-14

.05 2001 30-29 .164

.105-101 2004/2

.843 2003

2003 02/

:

:(1)

.17

:(2)

:(3)

:(4)

:(5)

:(6)

:(7)

:(8)

:(9)

:(10)

:(11)

:(12)

:(13)

.6