

2004-1999

:1-1

(1)

:1-1-1

2004-1999

2004	2003	2002	2001	2000	1999	
173.8	143.5	139.1	-	-	-	
142	132.7	120.6	112.6	100.5	90.1	
28.4	26.6	25.3	24.4	23.2	21.9	
82.9	74.4	67.6	65	62.8	60.8	
521.7	489.2	470.4	452.3	433.9	427.2	*
771	738	701.6	649.4	624.4	619.7	
187.5	156.7	137.4	124.2	101.4	23.7	
1907.3	1761.1	1662	1427.9	1346.2	1243.4	

. 2004-1999

:

-

(1)

1999	619.7	2004-1999			(1)
(10)			2004	771	
521.7	1999	427.2			(2)
90.1		2002		2004	(3)
		2004	142	1999	
	' 2004-1999		29		(4)
		2004		82.9	

:2-1-1

(2)

2004-1999

2004	2003	2002	2001	2000	1999	
1023900	703600	472200	365200	334000	205200	
793600	563300	377000	342800	300000	197500	
230300	140300	95200	22400	34000	7700	

. 2004-1999

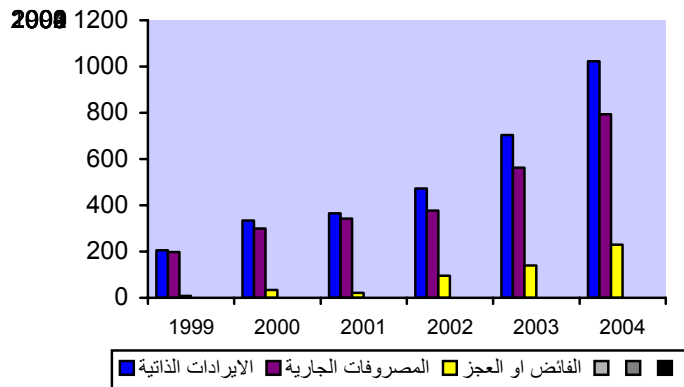
-: (2)

2004	2003	2001	2000		(1)
			2005		
. 2004-2002			200-1999		(2)
2004-1999					(3)
(1)					

. 2004-1999

(1)

2004 - 1999



:3-1-1

476.1

254 2004 2000 1999
 . 2004-1999 2004 297.5
 (3)

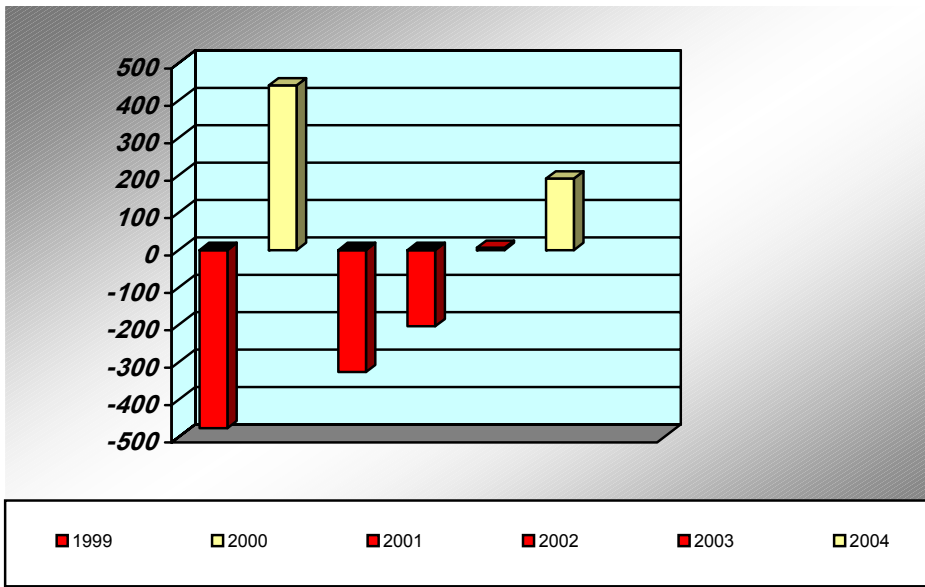
2004-1999

(476.1)	1256.2	780.7	1999
440.3	1366.4	1806.7	2000
(326.1)	2024.8	1698.7	2001
(203.7)	2152.8	1949.1	2002
6.1	2536.1	2542.2	2003
191.6	3586.2	3777.8	2004

2004-1991

(2)

2004-1990



)

(

2004 4075.2 2002 2152.8 1999 1256.2

:2-1

2004-1999

(1)

:1-2-1

(4)

2005-1999

2005	2004	2003	2002	2001	2000	1999	
14	12	14	14	12	20	28	- %
14	12	14	14	12	10	6	% -
10	10	10	10	10	10	10	
-	-	-	-	-	50	50	%
//	//	//	//	//			(1)*
//	//			-	//		
(2)*	//	//	//	//	//		

2005-1999

:

-(4)

%20" 1999 %6 %28 (1)
 %14 2001 " %12 " 2000 " %10
 2004 %12 2003 2002
 . 2005 %14
 . 2005 2001

()

*(1)

%10

*(2)

2005

-1999 %10 (2)
 . 2004 (3)

. 2005 2005

"%76"

2005-1999 :2-2-1
 (5)

2005-1999

2005	2004	2003	2002	2001	2000	1999	
				(1)	%90	%95	
%10	%10	%10	%10		%7	%5	2)
					%10	%5	

2004-1999

: (5)

2000 1999 %90 %95 (1)

. 2001

. 2005 -1999 %10 - %5 - (2)

.2006

:1-2

/ ()

()
 .()

" "

(1)

(2)

()

:2-2

146

:

:1-2-2

6

%4

500

∴

:2-2-2

%4

:

:3-2-2

26

1992 1994

()

:

:4-2-2

()

)

(2)(

:3-2

-:

- 1
- 2
- 3
- 4
- 5
- 6
- 7

(6)

-:

.2001-1995

(6)

2001	2000	1999	1998	1997	1996	1995	
-	-	-	-	-	-	*-	
4266	3360	2417	1148	544	526	-	
	4184.7	10450	6400	2580	950	278	
2629	2113.9	443.7	1175	1049	531.7	185.8	
-	-	-	-	-	-	-	
-	-	-	-	-	-	-	
-	-	-	-	-	-	-	
	1340	2200	133	160	-		
	173.5	148	151.1	90.2	34.7		
	12.8	34.4	5.2	15.8	-		
	39.1	12.6	14.4	17	18.6		
	3115.6	2102.3	1713	706.8	341.7		
	5263.9	3389.4	2208.7	1062.9	371		/
	421	292	169	175	-		
	574.1	393	322	300.6	-		
	335.4	304.4	150.6	89.4	81.3		/
	8.4	34.6	47.5	50	50		

: (6)

(1)

(2)

(3)

2000 – 1995 %34.4 %5.2
 2001-1995 %182.8 %12.6
 %694.8 %300.6

(4)

2001-1995

2000-1995 %335.4 %81.3

(5)

%20.6 %5

(6)

(7)

(7)

2001	2000	1999	1998	1997	1996	1995	
1458522	1586847						
	24606	3106	1638	812			
151135	144858	139419	134739	126661	120824	115018	
108231	74991	62804	53216	44382	38730	33548	
199258	343875	266811	265487	197022	151642	-	
-	-	-	-	-	-	-	
-	-	-	-	-	-	-	
31900000	31100000	30300000	2950000	28.700000	27.900000		
%6	%7						
1917146	217577	472140	455080	368877	311196	148566	
76	73	-	-	-	-	-	
-	1.1	0.7	0.4	0.3	-	-	
8	6.6	29.5	29.6	34.3	38.8	77.4	
5.6	3.5	13.3	11.7	12	12.5	22.6	
10.4	15.8	56.5	58.3	53.4	48.7	-	
100	100	100	100	100	100	100	

-(7)

1999-1995

(1)

. 2001 2000

%76 %73

(2)

%8 %6.6

(3)

(4)

2001 2000

%6 %7

(5)

(3)

. 2001-2000

%6 %7

:

:1-3

()
 (3) (9) (8) (4) %75
 (8)

2004 - 1999

2004		2003		2002		2001		2000		1999		
91665	284579	58762	197915	52230	151134	46578	112858	4689 5	7820 3	24482	5929 5	
1664	32469	1548	23740	1618	20044	1342	15190	1172	1258 4	569	1737 3	
108513	67054	84696	60945	60788	40432	37662	31417	1800 4	1992 8	17095	3990	
52748	7957	40806	4531	32262	4567	25652	3510	9934	1505	21606	1110	*
254590	392058	185812	287140	14689 8	216177	111235	162975	7600 6	1212 20	63752	8176 8	

(25) (24)

(26)

*

2004 - 1999

2004		2003		2002		2001		2000		1999		
14.1	44	12.4	41.8	14.8	41.6	17	41.2	23.8	39.7	16.8	40.7	
0.3	5	0.4	5.1	0.4	5.5	0.5	5.5	0.6	6.4	0.5	11.9	
16.8	10.4	17.9	12.8	16.7	11.1	13.7	11.5	9.1	10.1	11.7	2.7	
8.2	1.2	8.6	1	8.9	1.3	9.4	1.3	5	0.8	14.8	0.8	*
39.4	60.6	39.3	60.7	40.4	59.5	40.6	59.4	38.5	61.5	43.8	56.2	

(8)

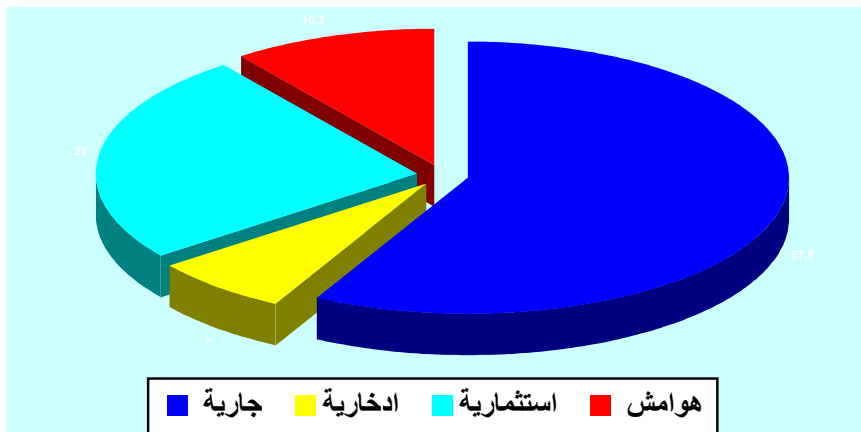
(9)

*

: (9)

	%41.4	%44 - %39.5	(1)
		%16.4	%23.8 - %12.4
		2004-1999	%57.8
%6.5		2004-1999	%11.9 - %5
	%0.5		%0.6 - %0.3
		2004-1999	%7
%9.8		2004-1999	%12.8 - %2.7
	%15.0		%7.9 - %9.1
			%25
%1.1		%1.3 - %0.8	(4)
		%9.1	%14.8 - %5
			%10.2
%40.3		%59.7	(5)
			2004-1999
%24.8		%57.7	(6)
		%7	%10.2
(3)			2004-1999
			(3)

2004-1999



:2-3

(5) (4) (11) (10)

2005-1999

*2005	2004	2003	2002	2001	2000	1999	
118000	165298	125859	74265.5	57869.4	34188.2	36200	
89400	137239	65459	57651.2	45329.4	43446.1	22700	
11700	24625	16093	9568.6	9147.9	3554.9	3000	
5900	12653	13521	6855.6	7298.7	3396.6	3700	
51500	89259	60994	58439.7	26736.6	16738.7	8000	**
276500	429071	281926	206780.6	146382	101324.5	73700	

2005-1999

(11)

2005 - 1999

** 2005	2004	2003	2002	2001	2000	1999	
42.7	38.5	44.7	35.9	39.5	33.7	49.1	
32.3	32	23.2	27.9	31	42.9	30.8	
4.2	5.7	5.7	4.6	6.2	3.7	4.1	
2.2	3	4.8	3.3	5	3.3	5.1	
18.6	20.8	21.6	26.3	18.3	16.4	10.9	**
100	100	100	100	100	100	100	

(2005

) 2005

** . 2004-1999

:

(10)

(11)

)

*

:

(11) (10)

2005 -1999

%49.1 -%33.7

(1)

%42.9 -%23.2

2005 -1999

%6.2 -%3.7

(2)

. 2005,2004

2005 -1999

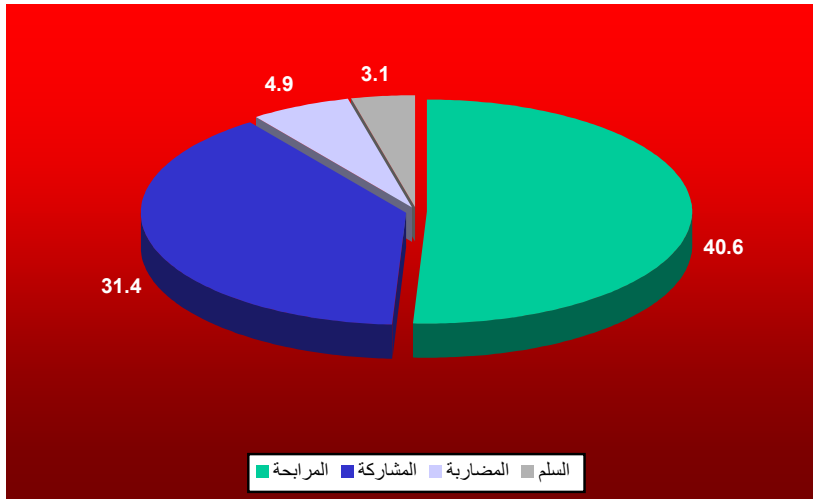
%5.1 -%2.2

(3)

(4)

(4)

2004 - 1999



(12)

2004-1999

2004	2003	2002	2001	2000	1999	
29631	27322	23678	19605	17807	14836	
40691	29518	25408	22215	10517	8425	
30026	27599	23268	30267	18458	9814	
134868	65409	26076	12806	5638	5797	
109761	71916	39425	21928	10211	3919	
99417	72995	55346	33247	30084	18329	
444395	294759	193201	140068	92715	61120	

78 2005 37 :

(13)

2004-1999

2004		2003		2002		2001		2000		1999	
0.3	6.3	0.2	9.1	0.4	11.8	-	14	-	19.2	-	24.3
1.7	7.5	1.7	8.4	2.4	10.8	4.1	11.7	2.3	9	2	11.8
-	6.7	0.1	9.3	0.7	11.4	6	15.6	1.7	18.2	2.4	13.7
29.2	0.8	21.8	0.4	9.8	3.7	6.2	2.9	4.9	1.2	7	2.5
1	23.8	0.7	23.7	1.7	18.8	0.7	14.9	2.1	8.8	1.8	4.6
2.2	20.5	2.3	22.3	2.2	26.3	3.5	20.4	3.5	29	7	22.9
34.4	65.6	26.8	73.2	17.2	82.8	20.5	79.5	14.6	85.4	20.2	79.8

-(13) (12)

(12)

(1)

(13)

(2)

%24.3-%7.6

%15.8-%9.2

%24.8-%6.4

(3)

%30-%6.1

2004-1999

%85.4- %65.6

(4)

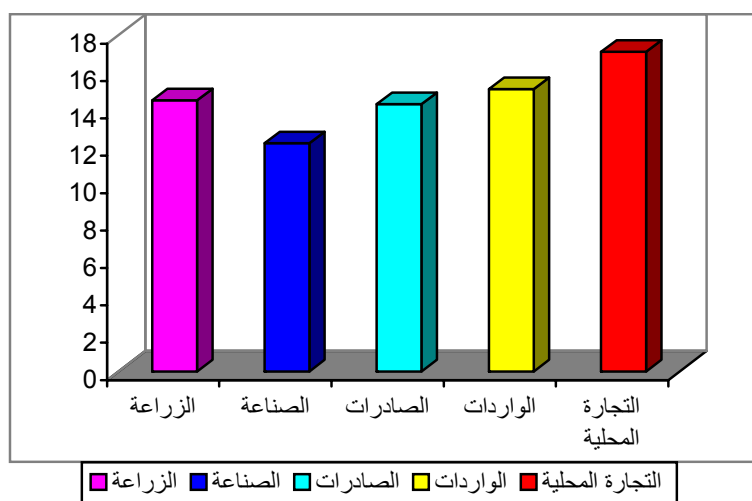
2004 2003

%34.6 -%14.6

(5)

(5)

2004 - 1999



-2000

2004

()

()

:1-4

()

2004-2000

2004		2003		2002		2001		2000	
%		%		%		%		%	
0.7	112.3	1.7	128.8	3.5	222.8	5.5	326.9	2.1	102.4
2.2	602.8	1.5	351.4	1.5	204.5	3.5	222.9	12.5	593.3
9.6	4260.8	8.8	2221	9.9	1757	14.5	1877.9	9.3	628.2
2.5	249	3.8	374	5.1	548.4	4.3	272.8	6.7	348.3
7.9	3246.6	10.7	2507.2	11.2	1154.6	12.5	577	8.5	650.3
0	0	1.5	133.9	4.1	265.4	7	550.3	10.4	380.2
3.8	432.7	5.5	674.8	7.7	738.4	8	467.9	8.8	376.9
11.6	1467.3	17.3	1496.5	9.9	664.6	3.6	213.9	9.4	268.6
2.1	443.8	4.1	421.7	3.5	391.3	4.4	458.9	4.1	224.2
1	37	0.2	6	15.8	479.1	22.1	1297.7	14.6	1213.9

2.8	17.8	0	0.1	1.1	24.2	3.9	37.7	9.6	48	
24.8	2114.6	11.6	663.6	13.3	640.9	17	586.5	23.4	568.2	
0.6	103.3	4.4	404.2	1.4	69.3	5.3	238.3	5.8	125.5	
3.9	214.5	6.5	299.4	1.8	146.2	0	0	76.2	24.2	
2.6	116.3	3.9	68.9	12.8	117.1	4.6	50.2	3.4	41.4	
1.2	286	2.4	564.1	1.6	384.8	1.4	154.4	5.3	671	
14.5	1209.9	8.8	478.4	4.9	341.3	3.1	188.6	4.4	210.9	
0.3	264.2	1	758.8	1	462.5	2.6	773.6	2.6	422.7	
4.4	738	5.1	594.6	4.8	432.1	3.2	420.3	4.1	200	
40.5	3690.2	3.5	60	0.4	1	1.2	1	0	0	
8.6	13	18.8	31.5	3.5	4.5	0	0	0	0	
0	0	0	0	0	0	0	0	0	0	
0.1	12.1	0.6	45.1	5.8	75.4	3.5	80.4	6	80.1	
1.8	10.1	0	0	0	0	0	0	0	0	
0.6	0.4	9.7	9	9.4	17.4	8.3	102.5	8.9	87.1	
0	0	0	0	0	0	0	0	0	0	
0	0	0	0	0	0	0	0	0	0	
4.6	19642.9	4.4	12293	4.4	9143	6.1	8899.7	7.2	7,265.50	

-: (14)

2000 %7.2 (1)

%4.6 2004 2003 2002 2001 (2)

(7%) 2000

2001 %10 (3)

: 2002 (%6.1) %10 (4)

2003 (%4.4) %10 (5)

2004 (%4.4) %10 (6)

2004 -2000 (%4.6) (7)

(15)
()
2004-2000

2004		2003		2002		2001		2000		
%		%		%		%		%		
0.6	112.3	1.0	128.8	2.4	222.8	3.7	326.9	1.4	102.4	
3.1	602.8	2.9	351.4	2.2	204.5	2.5	222.9	8.2	593.3	
21.7	4260.8	18.1	2221	19.2	1757	21.1	1877.9	8.6	628.2	
1.3	249	3.0	374	6.0	548.4	3.1	272.8	4.8	348.3	
16.5	3246.6	20.4	2507.2	12.6	1154.6	6.5	577	9.0	650.3	
0.0	0	1.1	133.9	2.9	265.4	6.2	550.3	5.2	380.2	
2.2	432.7	5.5	674.8	8.1	738.4	5.3	467.9	5.2	376.9	
7.5	1467.3	12.2	1496.5	7.3	664.6	2.4	213.9	3.7	268.6	
2.3	443.8	3.4	421.7	4.3	391.3	5.2	458.9	3.1	224.2	
0.2	37	0.0	6	5.2	479.1	14.6	1297.7	16.7	1213.9	
0.1	17.8	0.0	0.1	0.3	24.2	0.4	37.7	0.7	48	
10.8	2114.6	5.4	663.6	7.0	640.9	6.6	586.5	7.8	568.2	
0.5	103.3	3.3	404.2	0.8	69.3	2.7	238.3	1.7	125.5	
1.1	214.5	2.4	299.4	1.6	146.2	0.0	0	0.3	24.2	
0.6	116.3	0.6	68.9	1.3	117.1	0.6	50.2	0.6	41.4	
1.5	286	4.6	564.1	4.2	384.8	1.7	154.4	9.2	671	
6.2	1209.9	3.9	478.4	3.7	341.3	2.1	188.6	2.9	210.9	
1.3	264.2	6.2	758.8	5.1	462.5	8.7	773.6	5.8	422.7	
3.8	738	4.8	594.6	4.7	432.1	4.7	420.3	2.8	200	
18.8	3690.2	0.5	60	0.0	1	0.0	1	0.0	0	
0.1	13	0.3	31.5	0.0	4.5	0.0	0	0.0	0	
0.0	0	0.0	0	0.0	0	0.0	0	0.0	0	
0.1	12.1	0.4	45.1	0.8	75.4	0.9	80.4	1.1	80.1	
0.1	10.1	0.0	0	0.0	0	0.0	0	0.0	0	
0.0	0.4	0.1	9	0.2	17.4	1.2	102.5	1.2	87.1	
0.0	0	0.0	0	0.0	0	0.0	0	0.0	0	
0.0	0	0.0	0	0.0	0	0.0	0	0	0	
100.0	19,642.70	100.0	12,293.00	100.0	9,142.80	100	8,899.70	100	7,265.40	

-(15)

(1)
(2)

:3-4
:1-3-4

(16)

2004		2003		2002		2001		2000		
%		%		%		%		%		
65.38	3405	76.2	3461.4	76.9	2766	36.6	3999	68.2	4708.6	
13.7	716.5	6.2	280.9	10.5	378.9	4.4	482	118.	1247.3	
1.2	64.4	1	45.6	7.5	270.9	58.6	6400	0.95	65.7	
70.	36.4	0	0	0	0	0	0	11.6	801	
19	993.4	16.6	753.3	4.99	177.5	30.	29.3	1.05	72.5	
100	5215.7	100	4541.2	100	3593.3	100	10910.3	100	6895.1	

-(16)

%76.9 - %36.6

(1)

. %64.6

. %10.5

%18 - %4.4

(2)

%58.6 %7.5 2001,2003 %1

(3)

. % 13.8

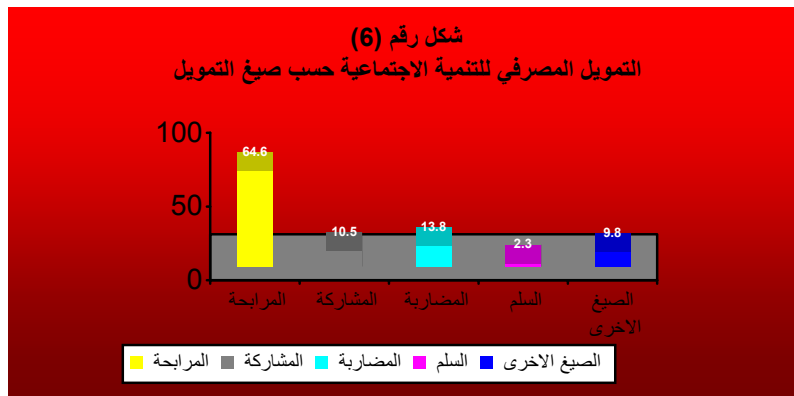
2004 2000

(4)

(5) . %9.8 %25.5 - %0.3

. %2.3

:2-3-4



(17)

2004		2003		2002		2001		2000	
%		%		%		%		%	
75.8	10943	468.	5300	72	3999	57.9	2978	48.5	2140.8
6	866.3	10.4	803.3	11.8	659.8	13.5	696.5	7.7	340.4
2	298.6	2.8	218.2	1.2	67.7	1	53	50.	20
1.2	183.3	4.9	380.6	1	58.8	2	105.9	18.2	801
14.8	2135.6	13.5	1049	13.7	764	25.3	1304	25.1	1108.6
100	14426.8	100	7751.2	100	5549.4	100	5138	100	4410.8

-: (17)

14426.8 2001 4410.8 (1)

. 2004

%75.8 - %48.5 (2)

. %64.5

%13.5 - %6 (3)

. %9.9 2002 (4)

%3 2004 - 2000 (5)

%1.2 (%18.1) 2000 . %1.5 (6)

%25.3 - %13.5 . %5.4 2004 (7)

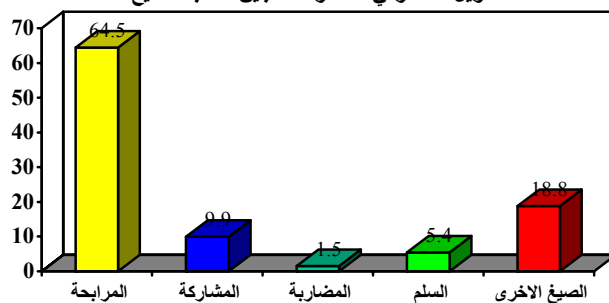
. %18.8

:3-3-4

(18)

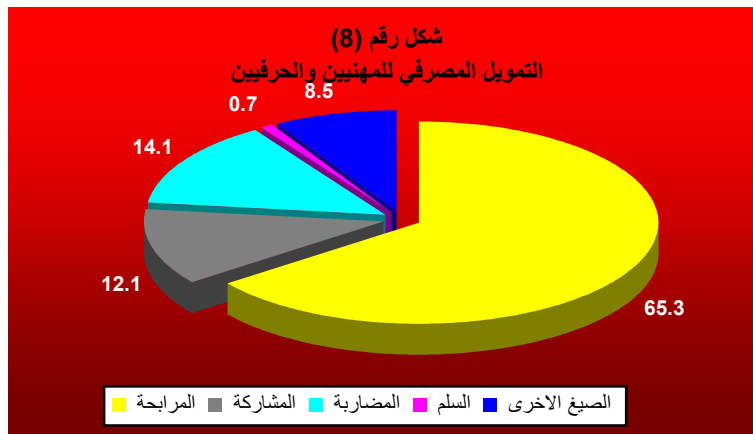
شكل رقم (7)

التمويل المصرفي لصغار المنتجين حسب الصيغ



2004		2003		2002		2001		2000		
%		%		%		%		%		
65.3	3,405	76.2	3461	76.9	2766	36.6	3999	71.4	2567.8	
13.7	716.5	6.2	280.9	10.5	378.9	4.4	482	25.2	906.9	
1.2	64.4	1	45.6	7.5	270.9	58.6	6400	1.3	45.7	
0.7	36.4	0	0	0	0	0	0	0	0	
19	993.4	16.5	753.3	4.9	177.5	0.3	29.3	2	72.5	
100	5215.7	100	4541.2	100	3593.3	100	10910.3	100	3592.9	

2001	2000	-:	(18)
		3592.9	(1)
			(10910.3)
2004-2000		%76.9 - %36.6	(2)
		.(%65.3)	
	%12.1	%25.2 - %4.4	(3)
		2001	%58.66 - %1.2
			. %14.1
	.(%0.7)	2004	(4)
.%8.5		%19 - %0.2	(5)



:

:1-5

-1

-2

-3

-4

-5

-6

-7

-8

..
(5)

-9

:2-5

:

:1-2-5

-1

-2

-3

:2-2-5

-:

-1

-2

-3

-4

-5

-6

-7

%25

-8

:3-2-5

-1

.()

-2

-3

-4

:4-2-5

-1

-2

-3

-4

)

-5

.(

-6

. 2005 - 1999

-1

-2

.29-28 2006

()

-3

.65-57 2002

. 2002

-4

-5

.36-32 2003 28-25